

MAYA ART AND
ARCHAEOLOGY TOUR
MEXICO
SOUTHERN YUCATAN
PENINSULA

May 11-20, 2019



LATIN AMERICAN
& IBERIAN INSTITUTE

NOTE: All photos by M. Robyn Côté or public domain unless noted or citation provided. This presentation is for information purposes only. Please do not reproduce, post or publish any portion of this presentation.

LAI COMMUNITY PROGRAMS ABROAD

- ▣ The LAII regularly offers international educational programs for community members. These programs do not provide academic credit, but instead provide informal educational experiences that allow members of the community to explore and learn about Latin America through dynamic, tailored itineraries.
- ▣ UNM students may receive independent study credit if special arrangements are made with participating faculty.

TOUR LEADERS

- ▣ Dr. Margaret Jackson
 - UNM Associate Professor of Pre-Columbian Art History
- ▣ M. Robyn Côté
 - LAII Program Manager
- ▣ ECOTURISMO YUCATAN
 - Tour Operator located in Merida, 30 years of experience, responsible for logistical arrangements in Mexico, provider of bilingual guide and driver of 18-passenger air conditioned van

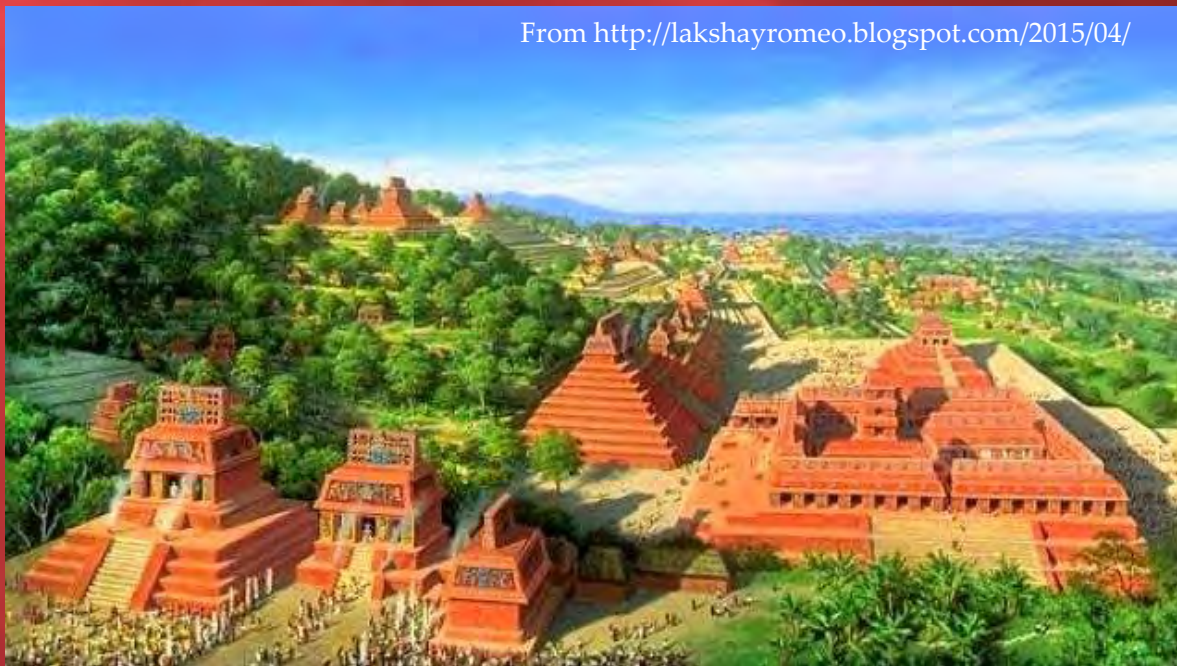
TOPICS

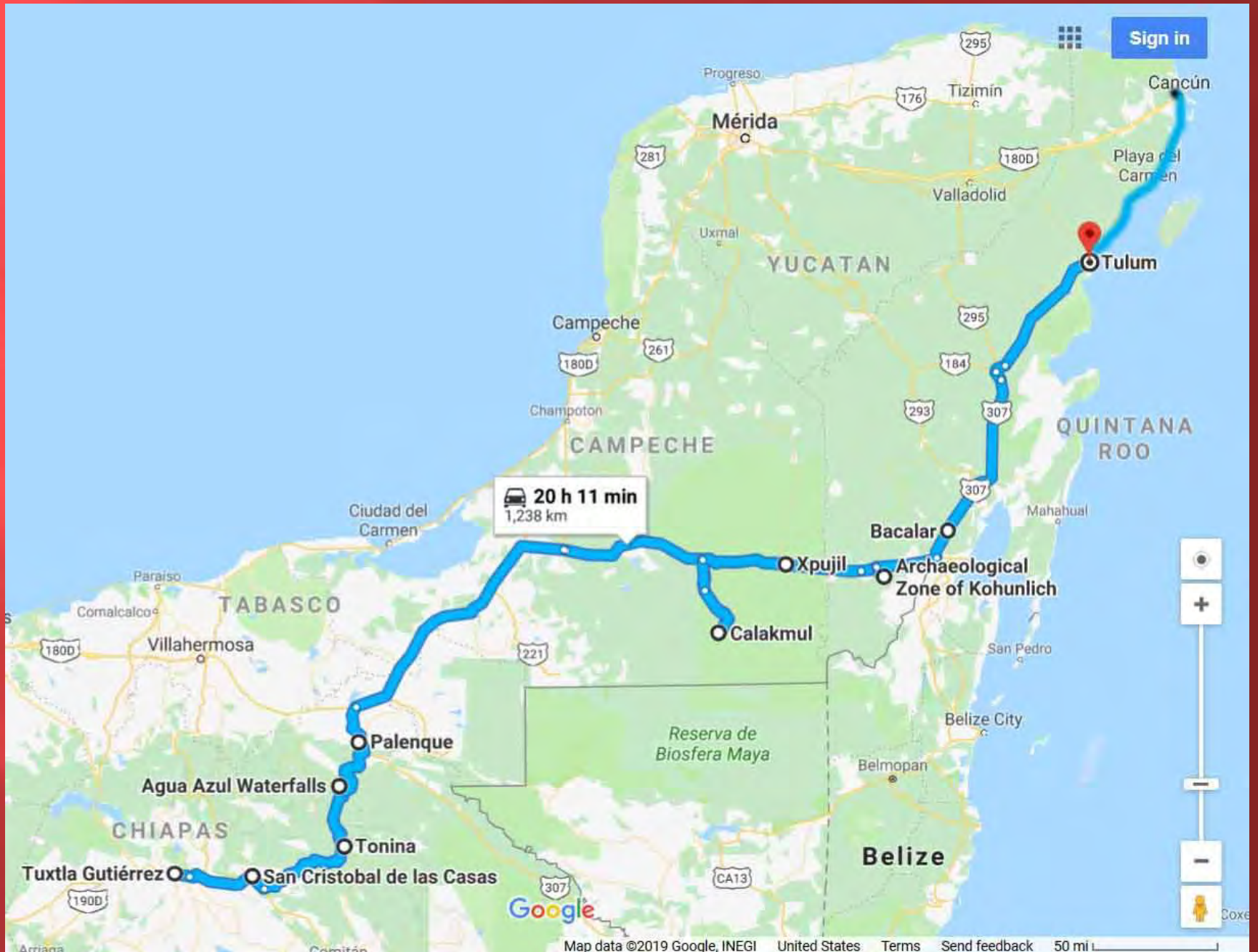
- ▣ Maya Archaeology
- ▣ Iconography
- ▣ Epigraphy
- ▣ History
- ▣ Culture
- ▣ Biodiversity
- ▣ Modern-Day Maya Communities



ITINERARY

- ▣ San Cristóbal de las Casas (Chiapas)
- ▣ Palenque (Chiapas)
- ▣ Calakmul and surrounding sites (Campeche)
- ▣ Tulúm (Quintana Roo)





SATURDAY, MAY 11

- ▣ **Departure from US to Tuxtla Gutiérrez International Airport (not included in tour price)**
 - Suggested flights:
 - ▣ DELTA 8108 – leaves Albuquerque 6 am
 - ▣ Stops in Salt Lake City
 - ▣ DELTA 641 Salt Lake City to Mexico City
 - ▣ DELTA 8108 to Tuxtla Gutiérrez International Airport
 - ▣ Cost from Albuquerque – one way - \$201
 - ▣ Baggage fee \$30 first checked bag, \$55 second bag
 - ▣ Check-in at Hotel Casa Mexicana
 - ▣ Dinner on your own



SUNDAY, MAY 12

▣ San Cristóbal de las Casas

- Tour of modern-day highland community of San Cristóbal de las Casas (pop. 220,000)
- Group lunch at TierrAdentro, non-profit organization run by Zapatista supporters
- Lecture in English on local Maya Zapatista movement (EZLN – *Ejercito Zapatista de Liberación Nacional*)
- Afternoon free to explore town, plaza, churches, museums, and market
- Dinner on your own



From Darij and Ana (CC BY 2.0)

TIERRADENTRO



Photo from <https://www.facebook.com/Centro-Cultural-Tierradentro-Caf%C3%A9-422931167799089/>

SAN CRISTÓBAL DE LAS CASAS



SAN CRISTÓBAL DE LAS CASAS



MONDAY, MAY 13

- ▣ **Early departure for Palenque, 5 hour bus ride**
 - Option to stop at Toniná ruins and museum and/or Agua Azul falls (depending on time)
 - Check in at Hotel Chablis in town of Palenque
 - Group dinner at hotel or other location



TONINÁ



- ▣ Late Preclassic to Terminal Classic site, 1 AD – 1000 AD, peak 600-850 AD, Late Classic
- ▣ INAH link https://www.lugares.inah.gob.mx/en/zonas-arqueologicas/zonas/1687-tonin%C3%A1.html?lugar_id=1687



TONINÁ



TONINÁ MUSEUM



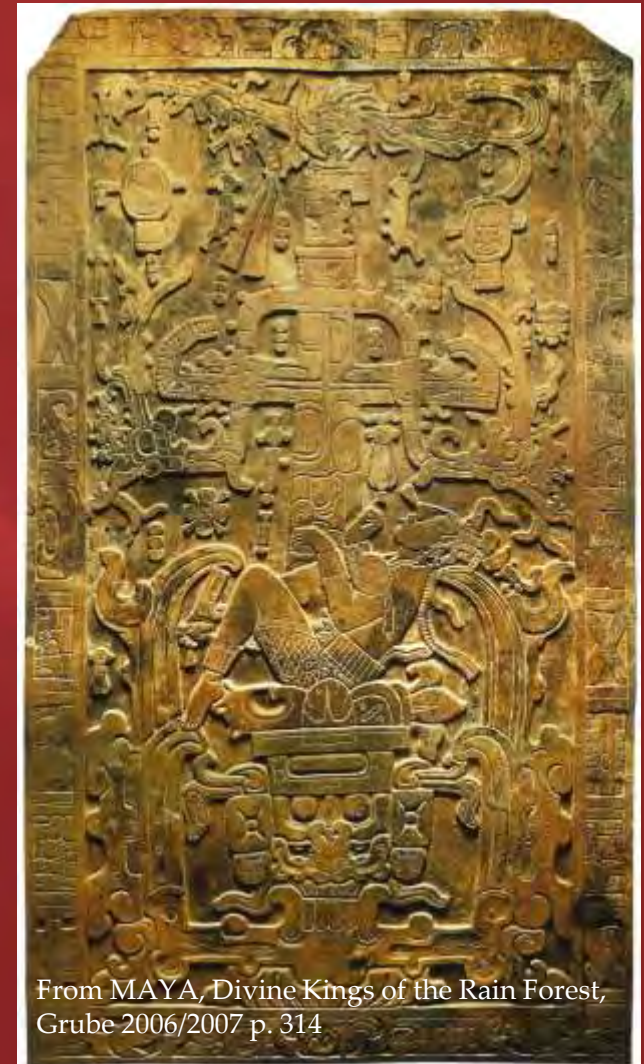
AGUA AZUL FALLS



TUESDAY, MAY 14

▣ Palenque

- Guided tour of Palenque Ruins
- Visit to Palenque Museum
- Group dinner at El Panchán



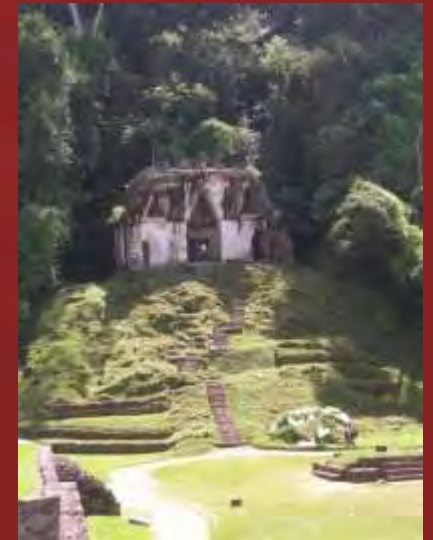
PALENQUE



- ❑ Early Classic to Late Classic, 250 BC to 900 AD, peak 615-783 AD Late Classic
- ❑ Site of reign of Kinich Janaab Pacal or Pakal the Great, King of Palenque
- ❑ Originally called *Baak (stone)* or *Lakam-ha*
- ❑ INAH site https://www.lugares.inah.gob.mx/en/zonas-arqueologicas/zonas/1685-palenque.html?lugar_id=1685



PALENQUE



PALENQUE



Red Queen of Palenque, Lady
Tz'akbu Ajaw, wife of Pakal
Photo by Selkie (CC BY-NC-SA 2.0)

WEDNESDAY, MAY 15

- ▣ **Travel by bus to Xpujil (5 hrs)**
 - Check in at Zoh Laguna, casual jungle bungalows
 - Sack Lunch provided
 - Optional trip to Maya Ruins of Hormigüero
 - Dinner on your own



All photos from Booking.com https://www.booking.com/hotel/mx/cabanas-y-hostal-zoh-laguna.html?aid=376370;label=bdot-YLKLhG9gYGizhZjWom8iwS267725059917%3Ap1%3Ata%3Ap1%3Ap22%2C204%2C000%3Aac%3Aap1t1%3Aneg%3Afi%3Atiaud-294889296173%3Akwd-334108349%3Alp9060444%3Ali%3Adec%3Adm;sid=a55f3b6d2c668e4987d99b8c84793c35;dest_id=900051642;dest_type=city;dist=0;group_adults=2;hapos=1;hpos=1;room1=A%2CA;sb_price_type=total;sr_order=popularity;sreporch=1548981547;srpvid=dac50495ba9402bb;type=total;ucfs=1&#hotelTmpl

HORMIGÜERO

- ▣ Early Classic to Late Classic, 300 AD – 950 AD
- ▣ INAH link https://www.lugares.inah.gob.mx/en/zonas-arqueologicas/zonas/1671-hormiguero.html?lugar_id=1671



Photo from INAH website https://www.lugares.inah.gob.mx/en/zonas-arqueologicas/zonas/1671-hormiguero.html?lugar_id=1671

THURSDAY, MAY 16

- ▣ Guided tour of Maya ruins of Becán, Chicanná, and Xpujil
- ▣ Visit to modern-day Maya community of 20 de noviembre



BECÁN

- ▣ Middle Preclassic to Late Classic, 600 BC – 1000 AD, peak 600-900 AD, Late Classic
- ▣ INAH link https://www.lugares.inah.gob.mx/en/zonas-arqueologicas/zonas/1660-pec%C3%A1n.html?lugar_id=1660



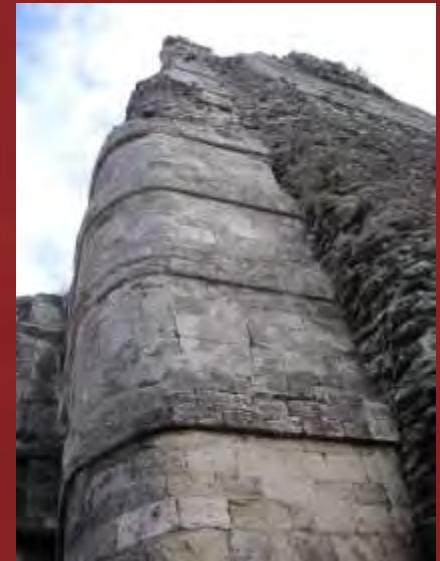
CHICANNÁ

- ▣ Middle Preclassic to Early Postclassic, 200 BC – 1100 AD, peak 500-700 AD, Late Classic
- ▣ INAH link https://www.lugares.inah.gob.mx/en/zonas-arqueologicas/zonas/1662-chicann%C3%A1.html?lugar_id=1662



XPUJIL

- ▣ Middle Preclassic to Late Classic, 300 BC – 1200 AD, peak 600-1000 in Late Classic
- ▣ INAH link https://www.lugares.inah.gob.mx/en/zonas-arqueologicas/zonas/1678-xpuhil.html?lugar_id=1678



20 DE NOVIEMBRE



Women's cooperative, clothing and jewelry made from native seeds, Cultivation of Melipoma (stingless) bees, medicinal honey



Photo by Heidi Konttinen (CC BY-NC 2.0)

FRIDAY, MAY 17

- ▣ **Guided tour of Maya Ruins of Balamkú**
- ▣ **Guided tour of Maya Ruins of Calakmul**



Photo by Heidi Kontinnen (CC BY-NC 2.0)

BALAMKÚ

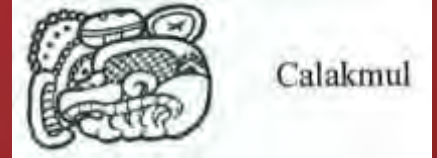


- ▣ Middle Preclassic to Late Classic site, 600 BC to 1000 AD
- ▣ INAH link https://www.lugares.inah.gob.mx/en/zonas-arqueologicas/zonas/1659-balamk%C3%BA.html?lugar_id=1659

Photo by orientalizing (CC BY-NC-ND 2.0)



CALAKMUL



- ▣ 250 BC – 1000 AD, peak 250 BC – 700 AD
- ▣ Capital of the Ka'an or "Snake" Kingdom, one of most powerful Maya dynasties during the early and late classic periods
- ▣ INAH link https://www.lugares.inah.gob.mx/en/zonas-arqueologicas/zonas/1661-calakmul.html?lugar_id=1661



From Calakmul World Heritage Site book (INAH et al, 2012)



CALAKMUL



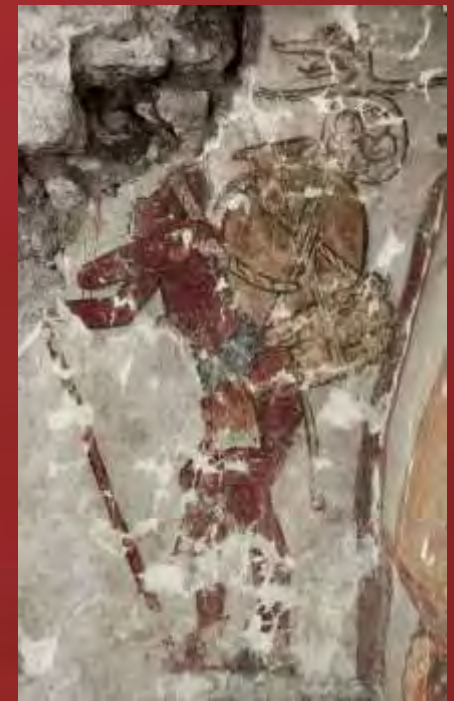
CALAKMUL



All Images from [The Murals of Chiik Nahb StructureSub1-4, Calakmul, Mexico](#) by Ramón Carrasco Vargas and María Cordeiro Baqueiro, Maya Archaeology, 2012.

<https://www.google.com/url?sa=t&rct=j&q=&esrc=s&source=web&cd=1&ved=2ahUKEwjm4YiRt5TgAhUCh1QKHwoND1kQFjAAegQIBRAC&url=http%3A%2F%2Fwww.mesoweb.com%2Farticles%2FCarrasco-Cordeiro.pdf&usg=AOvVaw0eVcwnymnzQqbnt41h2bcG>

CALAKMUL



All Images from The Murals of Chiik Nahb StructureSub1-4, Calakmul, Mexico by Ramón Carrasco Vargas and María Cordeiro Baqueiro, *Maya Archaeology*, 2012.

<https://www.google.com/url?sa=t&rct=j&q=&esrc=s&source=web&cd=1&ved=2ahUKewjm4YiRt5TgAhUCh1QKHwND1kQFjAAegQIBRAC&url=http%3A%2F%2Fwww.mesoweb.com%2Farticles%2FCarrasco-Cordeiro.pdf&usg=AOvVaw0eVcwnymnzQqbnt41h2bcG>

SATURDAY, MAY 18

- ▣ **Travel by bus to Tulum (4 hrs)**
 - With stop at Maya Ruins of Kohunlich
 - Lunch at Laguna Bacalar
 - Check-in at either Secret Garden Hotel or Don Diego de la Selva



Photo by Juliane Schultz CC BY-SA 2.0

KOHUNLICH

- ▣ Late Preclassic to Postclassic, 300 BC to 1200 AD, peak 600-900 AD, Late Classic
- ▣ INAH link https://www.lugares.inah.gob.mx/en/zonas-arqueologicas/zonas/1799-kohunlich.html?lugar_id=1799



Photo by Wolfgang Manousek (CC BY-NC 2.0)



Photo by RaubDaub (CC BY-SA 2.0)

LAGUNA BACALAR



Photo by Lara Danielle (CC BY-ND 2.0)



Photo by Eneas de Troya (CC BY 2.0)



Photo by Roberto Baños (CC BY 2.0)

SUNDAY, MAY 19

- ▣ **Guided tour of Maya Ruins of Tulum**
 - Afternoon free to go to beach or visit Gran Cenote or Xel-Há Park (on your own)



TULÚM

- ▣ Early Classic to Late Postclassic, 564 AD -1550 AD, peak during Postclassic
- ▣ INAH link https://www.lugares.inah.gob.mx/en/zonas-arqueologicas/zonas/1808-tulum.html?lugar_id=1808



TULÚM



TULÚM BEACH

Photo by by Jacob Wodzynski (CC BY 2.0)



GRAN CENOTE

Photo by Donepicr (CC BY 2.0)



XEL-HÁ PARK

Photo by pululante (CC BY 2.0)



MONDAY, MAY 20

▣ Departure

- Transfer to Cancún International Airport
- Plan for mid-afternoon departure from Cancún
- Return flight to US (not included in tour price)
- Suggested flights:
 - ▣ AA 2684 to Albuquerque, leave 4:43 pm arrive 11:05 pm \$256 one-way, \$30 first checked bag, \$40 second checked bag
 - ▣ SW to SLC, leave 4:35 pm arrive 12:10 am, \$276

WHAT TO EXPECT

- ▣ We'll start early most days, around 8 am
- ▣ We will do a considerable amount of road travel, with appropriate stops
- ▣ You will have evenings free, optional lectures
- ▣ Hotels may or may not have WI-FI
- ▣ Participants should be able to walk about 2–3 miles each day
- ▣ Be prepared for hot and humid days with limited air conditioning. Bring a hand-held fan or spray bottle.
- ▣ Make sure you bring a hat, sunscreen, and insect repellent. Zika and malaria do exist in area. Check with your medical provider.
- ▣ ATMs for cash will be available. Exchange rate is about 20 pesos to \$1.00 USD.

GASTRONOMY



Photo by Gary Stevens (CC BY 2.0)



Photo by Gideon (CC BY 2.0)



Photo by Miguel Discart (CC BY-SA 2.0)



Photo by Jennifer Woodard Maderazo (CC BY 2.0)



COST

- ▣ \$2448 for a double-occupancy room
- ▣ \$2796 for a single room
- ▣ Payments accepted via check or credit card
- ▣ \$600 non-refundable deposit due by February 25, 2019
- ▣ Balance due March 25, 2019



INCLUDED IN COST

- ▣ 9 nights' lodging in 3-star hotels
- ▣ Breakfast every day and 8 group meals (either lunch or dinner) as indicated in program
- ▣ Ground transportation in air conditioned 18-person van for all scheduled activities
- ▣ Entrance/Program fees associated with scheduled activities (unless otherwise indicated)
- ▣ Guides and translation for programmed activities
- ▣ Health insurance with CISI – Cultural Insurance Services International - including emergency medical evacuation and repatriation

NOT INCLUDED IN COST

- ▣ Airfare to/from Tuxtla Gutiérrez or Cancún
- ▣ Transportation from Tuxtla Gutiérrez International Airport to San Cristóbal de las Casas, about \$20 USD for a 1 hour taxi ride
- ▣ Passport or visa (tourist visa/immigration form will be provided by airline before landing)
- ▣ One meal per day (either lunch or dinner)
- ▣ Meals on international travel days
- ▣ Drinks not included with meals
- ▣ Optional and/or unscheduled activities (including transportation for those activities)
- ▣ Optional Travel/Trip Interruption Insurance (for example with Allianz Travel Insurance)

TO APPLY

- ▣ Go to <http://lail.unm.edu/abroad>
- ▣ Complete the [registration form](#)
- ▣ To pay by credit card click on link to our [secure credit card portal](#)
- ▣ SPACE IS LIMITED. Reserve your spot soon!



FOR MORE INFORMATION

- ▣ Contact M. Robyn Côté at 505-277-6843
or via email at rcote@unm.edu

